



MASTER CLASS

SUZANNE TUCKER ON POWDER ROOMS

"Powder rooms can be magical. Often they're diminutive, quirky spaces, which is all the more reason to turn them into fabulous jewel boxes. Consider their tucked-away locations and small scale—and, frequently, lack of natural light—an invitation to do something over-the-top, or at least a little unexpected. Charm your guests with whimsy, twinkling beauty, and sophisticated elements of surprise."



THE GILT-WOOD BENCH OFFERS A PLACE TO REST A HANDBAG.

TIPS ON POWDER-ROOM ESSENTIALS

LIGHTING

"Placing sconces too high or low causes unflattering shadows. Position them with the shades at face height. And they should always be on dimmers!"

MIRROR

"It doesn't need to be extremely expensive to have character and be a focal point."

SINK AND FAUCET

"Indulge in an unusual sink basin. It can be small, since it will be used only for washing hands. Make sure the faucet fixtures are easily maneuvered with soapy hands."

COUNTERTOP

"I like honed stone. It feels velvety to the touch and is more forgiving than polished stone, which can be prone to scratching."

FLOOR

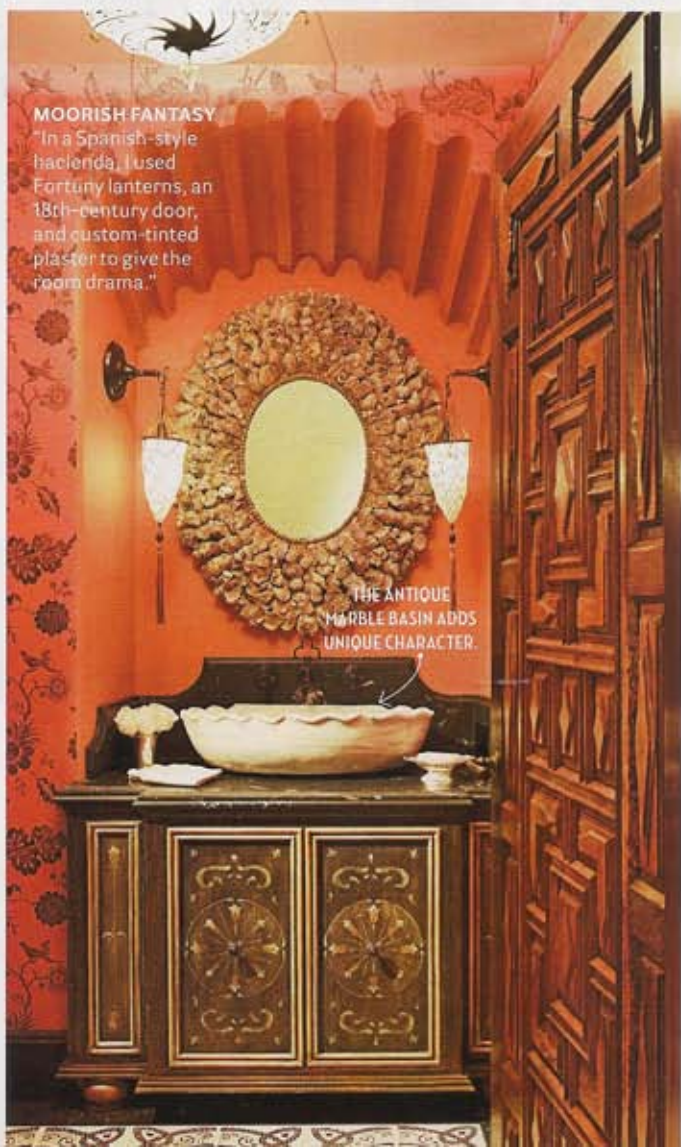
"A great place to splurge, because the square footage is generally small. Use a material different from those in the adjacent rooms—it reinforces a sense of privacy."

ART

"Absolutely hang it up! It's a wonderful chance for guests to appreciate something special in an intimate space."

FINISHING TOUCH

"Put flowers, even just a single stem, in a silver cup, which sparkles beautifully. I will often light a scented candle in a pretty container."

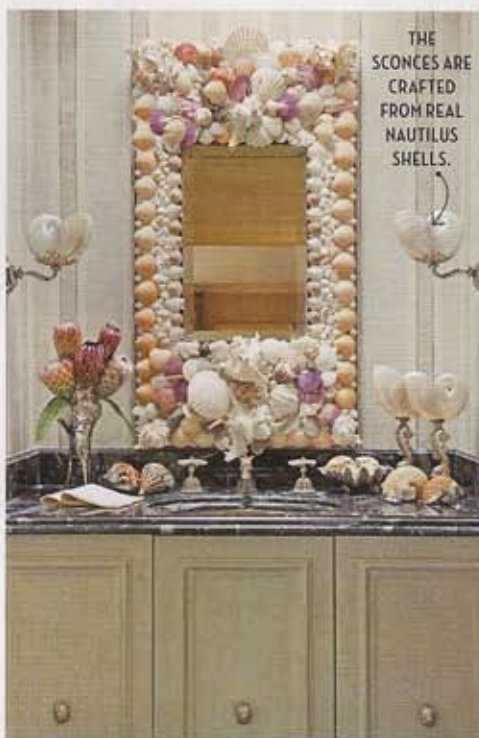


MOORISH FANTASY

"In a Spanish-style hacienda, I used Fortuny lanterns, an 18th-century door, and custom-tinted plaster to give the room drama."

THE ANTIQUE MARBLE BASIN ADDS UNIQUE CHARACTER.

▲ **HOMAGE TO DE WOLFE** "This bold space is a riff on Elsie de Wolfe's tented pavilion in Versailles. I covered the walls in a striped Clarence House fabric and installed crystal sconces and knobs."



THE SCONCES ARE CRAFTED FROM REAL NAUTILUS SHELLS.

▲ **UNDER THE SEA** "This is my own powder room, a Mediterranean je ne sais quoi inspired by the Michael Taylor shell mirror. I grew up in Santa Barbara, California, and have always had a passion for nautical objets."